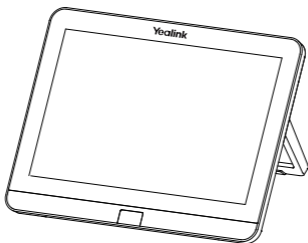


Yealink

Touch Panel

MTouch II



English | 简体中文

Quick Start Guide (V1.1)

Package Contents



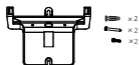
MTouch II



7.5m
Ethernet Cable



USB Type-C Cable
(with an HDMI adapter)



Mounting Bracket
and Accessories



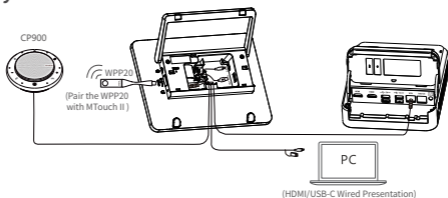
Screwdriver



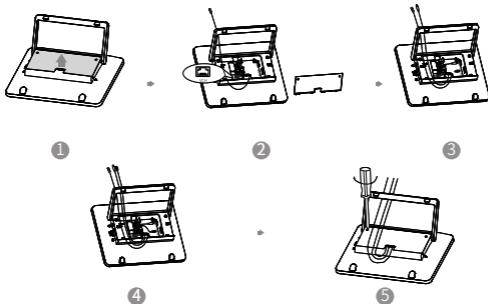
Quick Start Guide

MTouch II Connection

Connect your MTouch II



Assemble your MTouch II



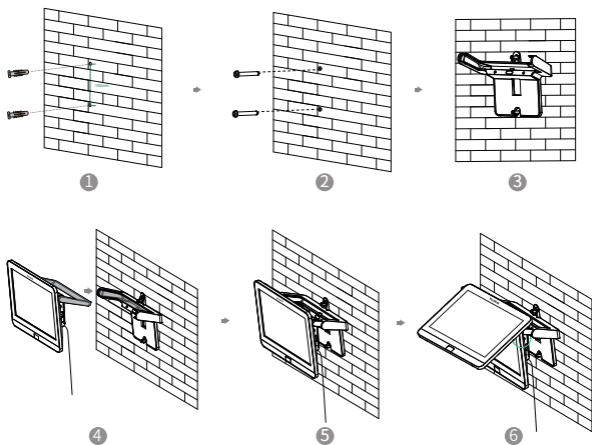
MTouch II Installation

• Put on a table

You can place the system on the conference room table and adjust the touch screen as you need.

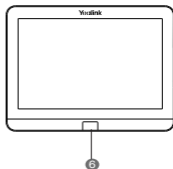
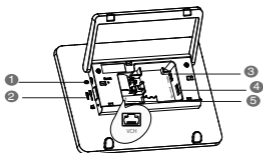


• Mount on a Wall



If the conference room environment allows, you can also route the MTouch II through the wall.

Hardware Interface Instructions



No.	Port	Description
①	3.5mm Headset	Connect to a headset.
②	USB-A Port	Connect to the WPP20 to pair with WPP20 for wireless sharing.
③	USB-C Port	Connect to the PC for wired sharing.
④	USB-A Port	Connect to a USB audio device, such as CP900.
⑤	VCH Port	Connect to the MCore, and the MTouch II is powered by the MCore.
⑥	Human Motion Sensor	The motion detection sensor, integrated in the front of the device, is used to automatically wake up the Yealink MVC system and light up the touch screen when you approach the touch screen.

Wireless Presentation

You can use Yealink WPP20 wireless presentation pod for wireless content sharing.


Procedure

1. Connect the WPP20 to the USB port of the MTouch II .
2. Wait for about 3 seconds, and the WPP20 LED indicator glows green.

The WPP20 is paired with the MTouch II successfully.

3. Connect the WPP20 to the PC.



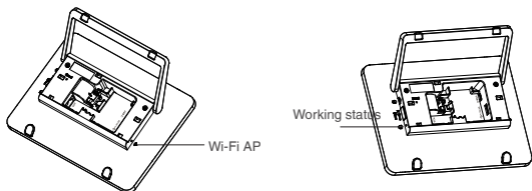
4. If the WPP20 is first connected to the computer, you need to manually start the Yealink Wireless Presentation Pod software from **This PC** in Windows 10 or from **My Computer** in Windows 7 and then upgrade the WPP20.
 - After starting the software, if it prompts that the firmware is different from the host version, you need to upgrade the WPP20 according to the prompts.
 - For the WPP20 running older versions, after starting the software, you need to manually upgrade the firmware on the software at the path of  -> **Version Update**.

After the upgrade is successful, the WPP20 is ready for content sharing.



Go to Yealink website(<http://support.yealink.com>) for the latest version of the firmware.

LED Indicator Instructions



• LED Indicator of Working Status

LED Status	Description
Solid yellow	MTouch II is not connected to a PC or you do not use WPP20 for content sharing.
Solid green	MTouch II is connected to a PC for wired sharing or you use WPP20 for wireless sharing.
Solid red	MTouch II is in sleep mode.
Fast-flashing yellow	MTouch II is upgrading firmware.
Slow-flashing red	Failed to upgrade firmware.

• Wi-Fi AP LED Indicator

LED Status	Description
Solid green	The WPP20 has been paired with the MTouch II and is connected to a PC for content sharing.
Solid yellow	The WPP20 is not connected to the MTouch II .
Solid red	MTouch II is in sleep mode.

包装清单



MTouch II



7.5米网线



USB Type-C线
(带HDMI转接头)




挂墙架配件



螺丝刀

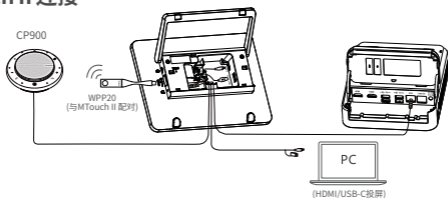


快速入门指南

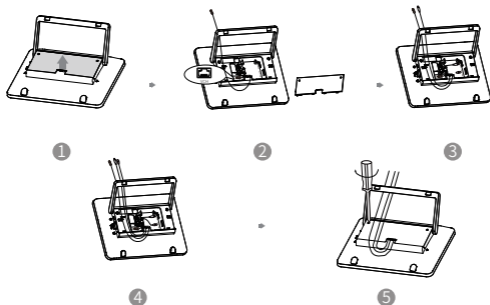
 此为A级产品。在生活环境中，该产品可能会造成无线电干扰。在这种情况下，可能需要用户对干扰采取切实可行的措施。

MTouch II 连线

MTouch II 连接



MTouch II 连线



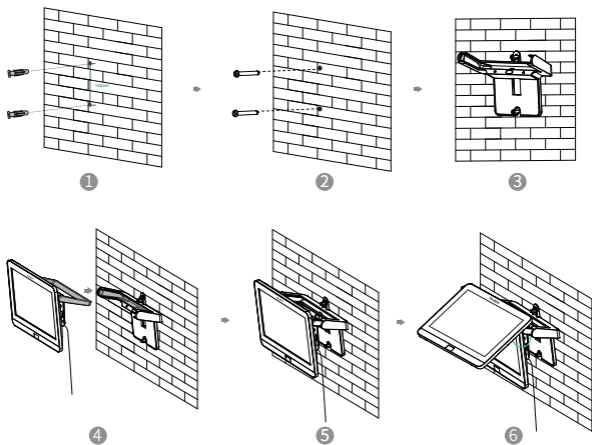
MTouch II 安装

• 置于桌面

你可以将MTouch II置于会议室桌面，MTouch II可以调节至需要的角度。

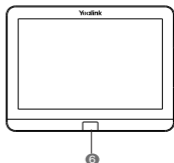
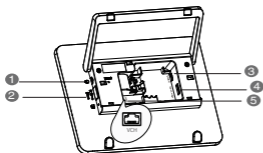


• 墙装



会议室环境允许的情况下，你也可以将MTouch II 穿墙走线。

硬件接口介绍




序号	接口	描述
①	3.5毫米耳机接口	连接耳机
②	USB接口	配对WPP20以进行内容共享。
③	USB Type-C接口	连接到PC进行内容共享。
④	USB接口	连接USB设备,如CP900。
⑤	VCH接口	连接MCore, MTouch II 由MCore供电。
⑥	人体运动侦测传感器	当探测到人靠近MTouch II时,自动唤醒Yealink MVC系统设备。

无线辅流分享内容

你可以使用WPP20无线传屏助手进行无线辅流分享内容。

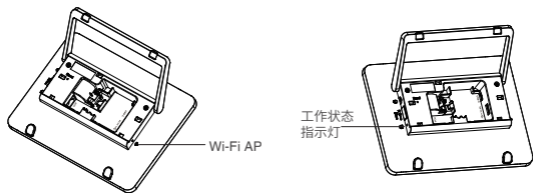
过程

1. 将WPP20 连接到MTouch II 的USB口。
2. 约3秒后, WPP20指示灯显示绿色常亮。
WPP20与MTouch II 配对成功。
3. 将WPP20连接到电脑上。
4. 首次将WPP20连接到电脑, 你需要从**计算机** (Windows7) 或从**此电脑** (Windows10) 中手动启动亿联无线传屏器软件并升级固件。
 - 启动软件后, 如果软件提示固件版本与主机不同, 根据提示完成WPP20固件升级。
 - 对于旧版本的WPP20, 启动软件后, 你需要在软件上的  -> **版本升级** 升级固件。升级成功后, 可以进行内容分享。



 如需最新版本固件, 请前往亿联技术支持官网 (<http://support.yealink.com/>) 下载。

MTouch II 指示灯



• 工作状态指示灯

指示灯状态	说明
黄色常亮	MTouch II 未连接电脑进行有线辅流分享内容或未使用 WPP20进行无线辅流分享内容。
绿色常亮	MTouch II 连接电脑进行有线辅流分享内容或使用 WPP20进行无线辅流分享内容。
红色常亮	MTouch II 进入休眠模式。
黄色快闪	正在升级固件。
红色慢闪	固件升级失败。

• Wi-Fi AP 指示灯

指示灯状态	说明
绿色常亮	WPP20与MTouch II 已配对并连接在电脑上可进行辅流分享。
黄色常亮	WPP20未连接到MTouch II 。
红色常亮	MTouch II 进入休眠模式。

Regulatory Notices

Operating Ambient Temperatures

- Operating temperature: +32 to 104°F (0 to 40°C)
- Relative humidity: 5% to 90%, noncondensing
- Storage temperature: -22 to +160°F (-30 to +70°C)

Warranty

Our product warranty is limited only to the unit itself, when used normally in accordance with the operating instructions and the system environment. We are not liable for damage or loss resulting from the use of this product, or for any claim from a third party. We are not liable for problems with Yealink device arising from the use of this product; we are not liable for financial damages, lost profits, claims from third parties, etc., arising from the use of this product.

Explanation of the symbols

- DC symbol

--- is the DC voltage symbol.

- WEEE Warning symbol

To avoid the potential effects on the environment and human health as a result of the presence of hazardous substances in electrical and electronic equipment, end users of electrical and electronic equipment should understand the meaning of the crossed-out wheeled bin symbol. Do not dispose of WEEE as unsorted municipal waste and have to collect such WEEE separately.

Restriction of Hazardous Substances Directive (RoHS)

This device complies with the requirements of the EU RoHS Directive. Statements of compliance can be obtained by contacting support@yealink.com.

Safety Instructions

Save these instructions. Read these safety instructions before use!

⚠ General Requirements

- Before you install and use the device, read the safety instructions carefully and observe the situation during operation.
- During the process of storage, transportation, and operation, please always keep the device dry and clean, avoid collision and crash.
- Please attempt not to dismantle the device by yourself. In case of any discrepancy, please contact the appointed maintenance center for repair.
- Please refer to the relevant laws and statutes while using the device. Legal rights of others should be respected as well.

⚠ Environmental Requirements

- Place the device at a well-ventilated place. Do not expose the device under direct sunlight.
- Keep the device dry and free of dusts.
- Do not place the device on or near any inflammable or fire-vulnerable object, such as rubber-made materials.
- Keep the device away from any heat source or bare fire, such as a candle or an electric heater.

⚠ Operating Requirements

- Do not let a child operate the device without guidance.
- Do not let a child play with the device or any accessory in case of accidental swallowing.
- Please use the accessories provided or authorized by the manufacturer only.
- The power supply of the device shall meet the requirements of the input voltage of the device. Please use the provided surge protection power socket only.
- Before plugging or unplugging any cable, make sure that your hands are completely dry.
- Do not spill liquid of any kind on the product or use the equipment near water, for example, near a bathtub, washbowl, kitchen sink, wet basement or near a swimming pool.
- During a thunderstorm, stop using the device and disconnect it from the power supply. Unplug the power plug and the Asymmetric Digital Subscriber Line (ADSL) twisted pair (the radio frequency cable) to avoid lightning strike.

- If the device is left unused for a rather long time, disconnect it from the power supply and unplug the power plug.
- When there is smoke emitted from the device, or some abnormal noise or smell, disconnect the device from the power supply, and unplug the power plug immediately.
- Contact the specified maintenance center for repair.
- Do not insert any object into equipment slots that is not part of the product or auxiliary product.
- Before connecting a cable, connect the grounding cable of the device first. Do not disconnect the grounding cable until you disconnect all other cables.

⚠ Cleaning Requirements

- Before cleaning the device, disconnect it from the power supply.
- Use a piece of soft, dry and anti-static cloth to clean the device.
- Keep the power plug clean and dry.

Troubleshooting

The unit cannot supply power to device other than Yealink device.

There is a bad connection with the plug.

1. Clean the plug with a dry cloth.
 2. Connect it to another wall outlet.
- The usage environment is out of operating temperature range.
1. Use in the operating temperature range.

The cable between the unit and the Yealink device is connected incorrectly.

1. Connect the cable correctly.
- You cannot connect the cable properly.
1. You may have connected a wrong Yealink device.

2. Use the correct power supply.

Some dust, etc., may be in the port.

1. Clean the port.

Contact your dealer or authorized service facility for any further questions.

FCC Statement

This device complies with part 15 of the FCC Rules. Operation is subject to the following

two conditions: (1) this device may not cause harmful interference, and (2) this device must accept any interference received, including interference that may cause undesired operation.

Any Changes or modifications not expressly approved by the party responsible for compliance could void the user's authority to operate the equipment.

IC Statement

This device complies with Industry Canada's licence-exempt RSSs. Operation is subject to the following two conditions:

- (1) this device may not cause interference; and
- (2) this device must accept any interference, including interference that may cause undesired operation of the device. CAN ICES-3(B)

Le présent appareil est conforme aux CNR d'Industrie Canada applicables aux appareils radio exempts de licence. L'exploitation est autorisée aux deux conditions suivantes :

- (1) l'appareil ne doit pas produire de brouillage;
- (2) l'utilisateur de l'appareil doit accepter tout brouillage radioélectrique subi, même si le brouillage est susceptible d'en compromettre le fonctionnement. NMB-3(B)

Contact Information

YEALINK NETWORK TECHNOLOGY CO.,LTD.
309, 3rd Floor, No.16, Yun Ding North Road, Hull District, Xiamen City, Fujian, P.R.C
YEALINK (EUROPE) NETWORK TECHNOLOGY B.V.
Strawinskylaan 3127, Atrium Building, 8th floor, 1077ZX Amsterdam, The Netherlands
YEALINK (USA) NETWORK TECHNOLOGY CO., LTD.
999 Peachtree Street Suite 2300, Fulton, Atlanta, GA, 30309, USA
Made in China

About Yealink

Yealink is a global leading provider of enterprise communication and collaboration solutions, offering video conferencing service to worldwide enterprises. Focusing on research and development, Yealink also insists on innovation and creation. With the outstanding technical patents of cloud computing, audio, video and image processing technology, Yealink has built up a panoramic collaboration solution of audio and video conferencing by merging its cloud services with a series of endpoints products. As one of the best providers in more than 140 countries and regions including the US, the UK and Australia, Yealink ranks No.1 in the global market share of SIP phones shipments.

Technical Support

Visit Yealink WIKI (<http://support.yealink.com/>) for the latest firmware, guides, FAQ, Product documents, and more. For better service, we sincerely recommend you to use Yealink Ticketing system (<https://ticket.yealink.com>) to submit all your technical issues.



430104001351

Web: www.yealink.com
Copyright©2020 YEALINK(XIAMEN) NETWORK
TECHNOLOGY CO.,LTD.All rights reserved.